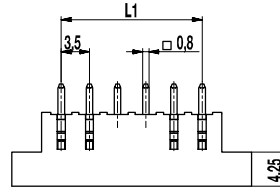
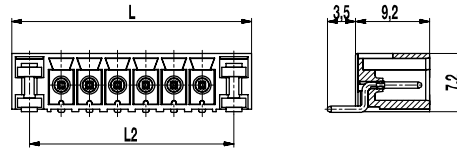
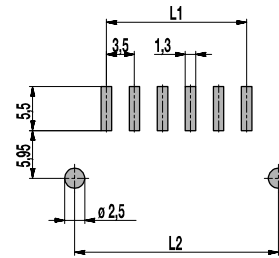


110-M-216-SMD

Pin strip for SMD
 Plug-in direction parallel to PCB, with solder flanges



PCB LAYOUT



L1 = (No. of poles - 1) x pitch
 L2 = L - 4,4
 Solder paste thickness: 0,2 mm

GENERAL INFORMATION

Pitch	3,5 mm
No. of poles	2 - 12
Usable with	all plug connectors of series 110

TECHNICAL DATA

Overvoltage Category	III	III	II
Pollution Severity Level	3	2	2
Rated Voltage	160 V	160 V	320 V
Rated Impulse Voltage	2,5 kV	2,5 kV	2,5 kV
Rated Insulation Voltage	130 V acc. to EN 60998-1		
Rated Current	8 A		
Soldering process	Reflow solder		

APPROVALS

	Current [A]	Voltage [V]	Group	AWG	[Nm]
	8	300	B, D		
	B	300	B		

MATERIAL

Moulding	PA HT, black, V-0
Comparative Tracking Index	CTI ≥ 600
Insulating Group	I
Temperature Range	40°C up to 120°C; reflow solder temperature peak max. 255°C acc. to DIN EN 61760-1
Solder pin	0,8 x 0,8 mm; tin plated brass
Solder cylinder	tin plated brass

OPTIONS / ACCESSORIES

- Consecutive numbering
- Special marking according to drawing
- Self-adhesive marking strip BST-3,50 [1]
- Coding elements 120-K-HT-WS

[1] To be fitted after reflow soldering process

CONFIGURATIONS

Poles	Part number	Article number	Length (L)	Packaging	PU	Tape Width	Tape Height
2	110-M-216-SMD/02	10.843.126	15,80 mm	Box	594		
3	110-M-216-SMD/03	10.843.127	19,30 mm	Box	486		
4	110-M-216-SMD/04	10.843.128	22,80 mm	Box	414		
5	110-M-216-SMD/05	10.843.129	26,30 mm	Box	360		
6	110-M-216-SMD/06	10.843.130	29,80 mm	Box	306		
2	110-M-216-SMD/02-T&R	10.843.126.A00	15,80 mm	Tape-on-Reel	475	56 mm	8 mm
3	110-M-216-SMD/03-T&R	10.843.127.A00	19,30 mm	Tape-on-Reel	475	56 mm	8 mm
4	110-M-216-SMD/04-T&R	10.843.128.A00	22,80 mm	Tape-on-Reel	475	56 mm	8 mm
5	110-M-216-SMD/05-T&R	10.843.129.A00	26,30 mm	Tape-on-Reel	475	56 mm	8 mm
6	110-M-216-SMD/06-T&R	10.843.130.A00	29,80 mm	Tape-on-Reel	475	56 mm	8 mm

further number of poles on request

